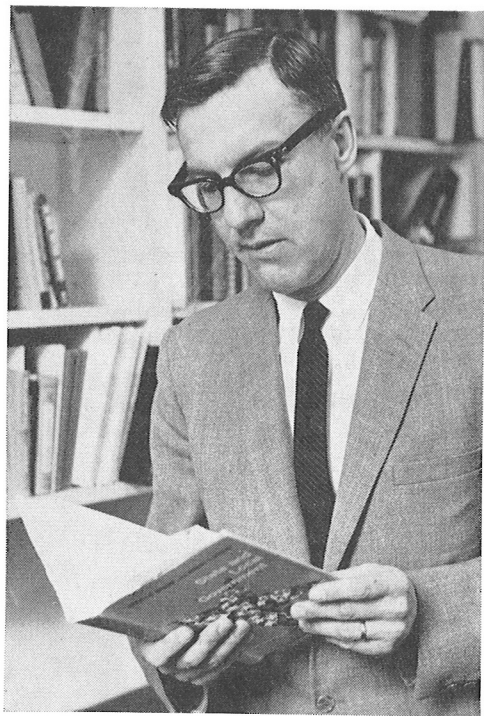


FOR MAYOR



Dr. Edward L. Henry

FOR MAYOR

- **VETERAN IN PUBLIC SERVICE**
St. Cloud School Board, 7 years
Past President;
present vice-president
- **BORN, REARED IN ST. CLOUD**
- **EDUCATION**
St. John's U.
Harvard Graduate School of Business
University of Chicago
- **COLLEGE PROFESSOR OF GOVERNMENT
& PUBLIC ADMINISTRATION**
- **WORLD WAR II, BOTH THEATRES**
- **ACTIVITIES**
Adult Great Books
Junior Great Books
Governor's Commission on Human Rights
Parish School Board
Director, Day Care Center for
Retarded Children
Vice-president, Stearns County Mental
Health Association
Tri-College Program

Re-elect

St. Cloud, Minn.



MAYOR ED HENRY

Mayor Ed

- * **Veteran in Public Service for 11 years**
St. Cloud School Board, 7 years
Mayor of St. Cloud, 4 years
State Municipal Commission, 2 years
President, Minnesota Mayors 1967-68
- * **Born, Reared in St. Cloud**
- * **World War II, Both Theatres**
- * **Education**
St. John's U.
Harvard Business School
U. of Chicago
- * **Community Activities**
United Fund
Retarded Children
Stearns Mental Health Assoc.
Tri-Cap
Parish School Board
Hospital Extended Care Center
Handicapped Persons
Human Rights Commission
- * **Progressive Government with
Reasonable Economy**

Prepared and Circulated by Elect Henry
Committee.



VITA

✓ 14th Year as Local Government Official:

Elected Mayor 1964 by 51%
Drafted in 1968 and elected with 74% majority carrying every Precinct.

✓ Statewide Recognition:

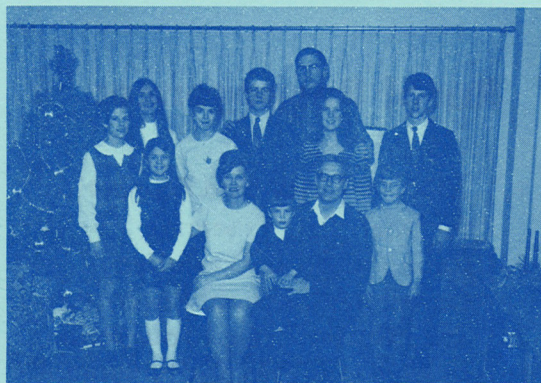
President—Minnesota Mayor's Association, 1967 - 1968
President—League of Minnesota Municipalities, 1968 - 1969
Vice-Chmn.—State of Minnesota Municipal Commission, 1965 - 1967

✓ Education:

Harvard
U. of Chicago
St. John's University

✓ Experience:

- 1.) U.S. Navy, 1943 - 46
- 2.) Newspaper Editor
- 3.) College Professor
- 4.) College Vice-President
- 5.) Public School Board, 1957 - 1964
- 6.) Chairman, First United Fund Drive, St. Cloud
- 7.) Past Vice-Chmn., Stearns DFL
- 8.) Director, Center for Study of Local Government, St. John's
- 9.) Mayor, County Seat in State's Largest Rural County



DFL, A Family Tradition!

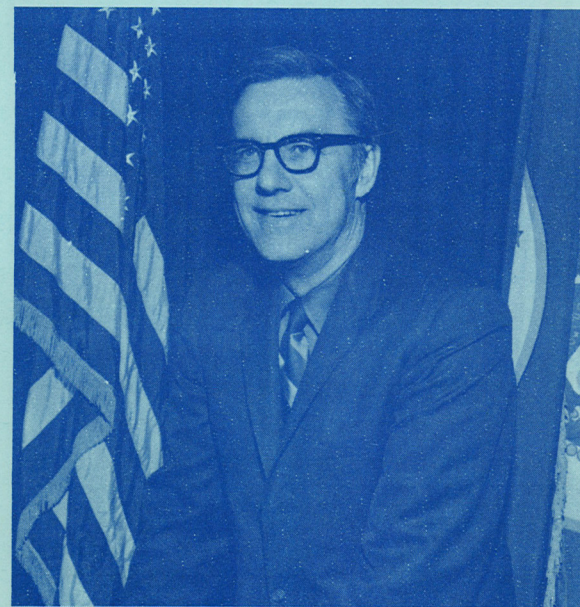
- 1.) At age of seven distributed campaign literature for Al Smith
- 2.) Father and Brother Long Term Stearns DFL Chairmen
- 3.) DFL County Central Committeeman, Many Years.
- 4.) Member 1970 DFL Task Force on Countryside Problems.

NB: The Three County Area containing St. Cloud, is the Fastest Growing Rural Area in the State. Forty-eight of 60 Rural Counties declined from 1960 - 1970.

MEET:

Mayor ED HENRY

SAINT CLOUD



"One of Finest Mayors, in the Country."

Senator Walter Mondale
TIMES, September 30, 1968

"In Ed Henry we have without a doubt one of the State's most highly qualified chief executives."

(Republican)

Editor of the St. Cloud **TIMES**
November 6, 1969

Action, Not Words

The Record as Mayor:

- ✓ New Airport
- ✓ New Bridge
- ✓ New Dam
- ✓ New Storm Sewer System
- ✓ New Metro Council
- ✓ Urban Renewal
- ✓ Low Income Housing (Three Types)
- ✓ New Franchise Fee on NSP (First in Minnesota in 30 years)
- ✓ Administration Reorganization in City Hall
- ✓ First Rural Poverty Program in Minn.
- ✓ Doubled Park and Recreation Acreage
- ✓ City Wage Scales made Competitive
- ✓ Joint Recreation Program with School District
- ✓ Raised \$12 Million in NEW FUNDS for City. (about \$300 for every man, woman and child in city — as much as the Property Tax per capita in same period)
- ✓ Human Rights Commission Formed
- ✓ Sports Complex Underway

Programs:

✓ Rural Resurgence:

- 1.) \$300,000 from Ford Foundation for Small City Research
- 2.) Consulted by Rockefeller Foundation on Rural Poverty
- 3.) \$60,000 from Local Foundation to stimulate Community Research in Minnesota Colleges
- 4.) National Lecturer on Rural Resurgence, eg. Bismarck, Atlanta, Oklahoma City, Madison, Portland, Me., etc.
- 5.) Director of a Study Center on Countryside Problems and Crime Abatement

✓ Rural Inter Governmental Cooperation:

- 1.) First Rural Metro Council in Minnesota
- 2.) Area wide Road Study underway with Federal Grant
- 3.) Metro Transit Authority in being to keep Buses running
- 4.) Metro-Wide Health Study, First in Minnesota
- 5.) Tri-County Library Established
- 6.) Area wide Metro Sewer Committee for 80 Square Mile Collection System

Programs:

✓ Rural Poor:

- 1.) Low Income Housing
- 2.) First OEO 3-County CAP Program in Minnesota
- 3.) Consultant on Rural Poverty
- 4.) Full Support for Surplus Food and Food Stamp Plans in Central Minnesota Area

✓ Pollution Control:

- 1.) First Metro Environmental Health Study in State
- 2.) First Outstate Air Pollution Control Ordinance
- 3.) Metro-Wide Sewer Planning underway — 80 Square Miles
- 4.) First outstate burning ban
- 5.) Long Range Separation of Sanitary from Storm Sewers underway in City. Three projects completed
- 6.) Pilot, Federally Funded Air Pollution Control Project underway
- 7.) Full Implementation of Wholesome Meat Act Inspection Program