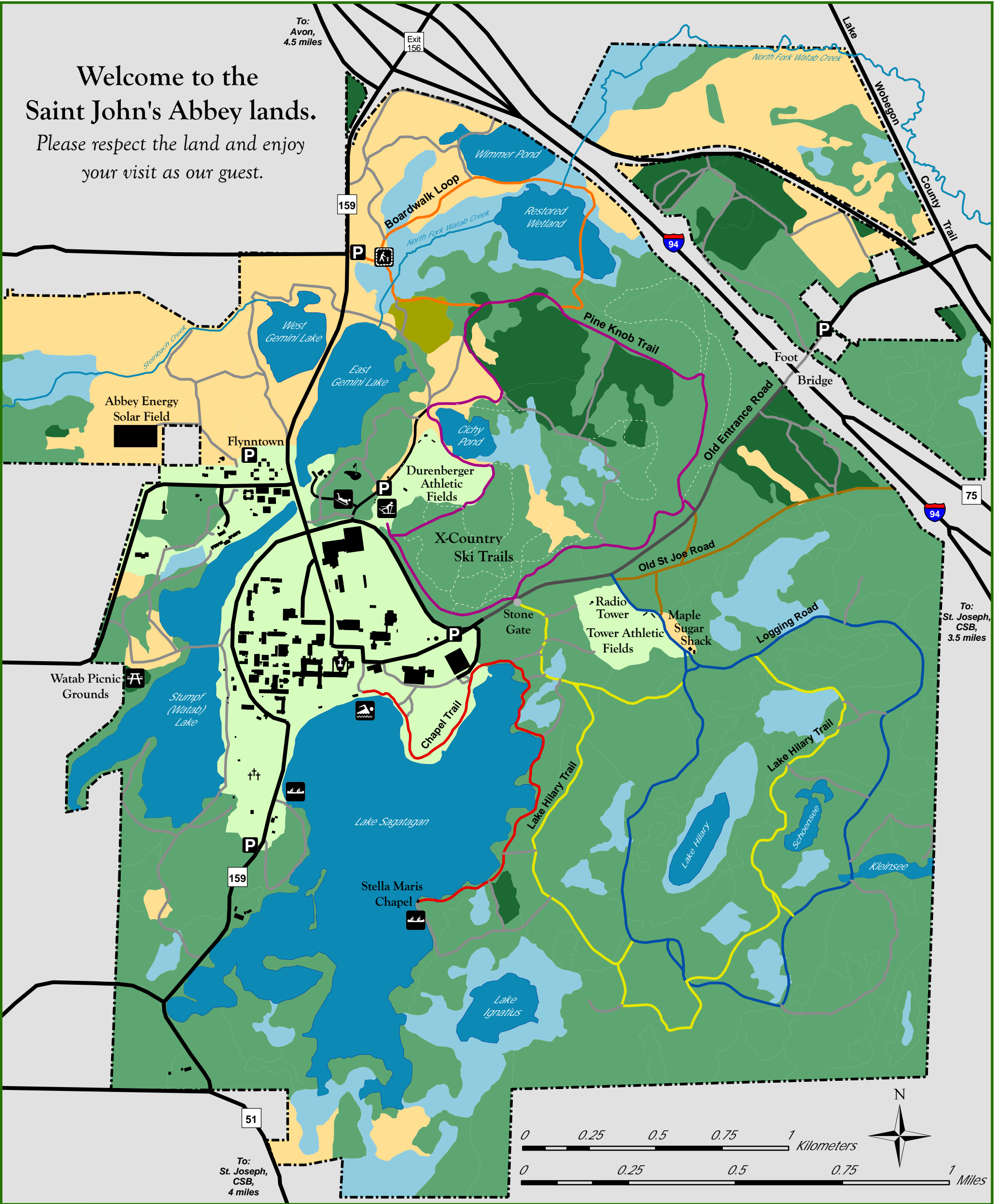


# Saint John's Arboretum Trail Map

Welcome to the Saint John's Abbey lands.  
Please respect the land and enjoy your visit as our guest.



## LEGEND

- P** Parking
- †** Abbey Church
- ††** Cemetery
- ⛶** Watab Picnic Grounds
- ⛶** Canoe Landing
- ⛶** Beach
- ⛶** X-Country Ski Trailhead
- ⛶** Prairie Kiosk
- ⛶** Disc Golf Course
- ⛶** Sledding Hill

### LAND TYPES

- Abbey Boundary
- Green** Hardwood Forest
- Dark Green** Conifer Forest
- Yellow-Green** Oak Savanah
- Yellow** Grass, Fields, and Brush
- Light Green** Campus
- Blue** Lakes
- Light Blue** Wetlands

### TRAILS

- Brown** Old Entrance Road
- Red** Chapel Trail 3.0 mi.
- Blue** Logging Road 3.4 mi.
- Yellow** Lake Hilary Trail 3.5 mi.
- Orange** Boardwalk Loop 1.5 mi.
- Purple** Pine Knob Trail 2.5 mi.
- Orange** Old St. Joe Road 3.0 mi.
- Grey** Other Maintained Trails
- Dashed** Winter Only Trails (Ski Trail Map on Reverse Side)

Trail lengths shown are for either round trip or full loop distance.

Bikes allowed only on paved surfaces.  
No dogs or other pets are allowed.  
No motorized boats allowed on the lakes.

Map Published Summer 2011  
Reference Use Only -- Not Ground Accurate



# SAINT JOHN’S ARBORETUM



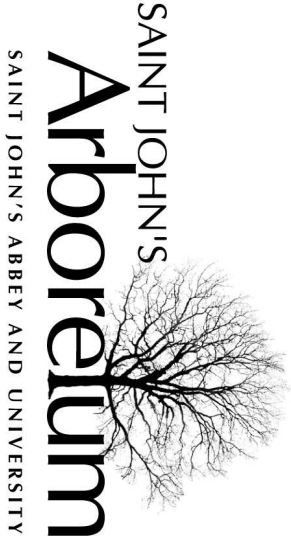
## TRAIL MAP

SAINT JOHN’S ABBEY & UNIVERSITY  
COLLEGEVILLE, MINNESOTA

### For More Information:

**Saint John’s Arboretum**  
Saint John’s Abbey & University  
Collegeville, MN 56321  
(320) 363-3163  
arboretum@csbsju.edu  
[www.csbsju.edu/arboretum](http://www.csbsju.edu/arboretum)

**Emergency/Fire**  
Life Safety Services: (320) 363-2144



### About

Saint John’s Arboretum encompasses the grounds of Saint John’s Abbey & University. Saint John’s is advantageously located in the unique area of terminal moraines (glacial deposits) that distinguish central Minnesota. Our 2,830 acres contain the highest concentration of native plant communities in the area, including oak and maple-basswood forests, tamarack and mixed-hardwood swamps and wet meadows.

Since 1856, the Benedictine monks who have lived on and worked the land at Saint John’s have placed a high value on preserving, sustaining, and improving the land. This long history of environmental stewardship, an enduring sense of place, and the educational mission of Saint John’s University inspired the designation of these lands as a natural Arboretum in 1997.

Preservation, sustainability, and restoration are principles that guide the management of the Arboretum. A strong emphasis on educational outreach offers the public many opportunities to benefit from Arboretum activities.

### Mission

- Preserve the native plant and wildlife communities of the Arboretum lands;
- Provide opportunities for education and research;
- Model practices of sustainable land use;
- Make accessible a natural environment that invites spiritual renewal.

### Vision

Saint John’s Arboretum celebrates the unique beauty and richness of God’s creation in central Minnesota and fosters the Benedictine tradition of land stewardship, education, and environmental respect.

### Guidelines

Saint John’s Arboretum lands are privately owned by the Benedictine monks of Saint John’s Abbey. Guests are encouraged to enjoy the natural beauty of Saint John’s while respecting established guidelines and restrictions.

*You are welcome to:*

- Walk, run, and ski the trails
- Bike only on paved surfaces
- Walk and snowshoe on and off the trails (except in the Monastic Gardens, which are private)
- Use non-motorized watercraft
- Fish from shore and from non-motorized watercraft (with an appropriate MN fishing license)
- Observe and study nature
- Take photographs

### Restrictions

- No dogs and other pets are allowed anywhere at any time, except as designated service animals
  - No biking on unpaved surfaces
  - No driving any vehicles on any trails or land without written permission
  - No open fires without written permission
  - No tenting or camping without written permission
  - No building of forts or other types of structures
  - No gathering or harvesting of any plants, plant materials, animals, fungi, or inorganic material without written permission
  - No motorized watercraft or motorized augers (incl. electric motors)
  - No swimming outside the designated beach area, or without a lifeguard on duty
  - No firearms or other weapons
  - Additional restrictions may apply
- Contact the Arboretum to learn more, or to obtain specific permissions.*

### Education & Research

Saint John’s Arboretum is a rare, natural, living laboratory for environmental education and research. Our environmental education is focused on hands-on science in the areas of forest, wetland and prairie ecology; global climatic change and human impacts on the environment; sustainability; and other topics.

Through understanding the complexities of the relationships between human and natural environments, we can begin to recognize the complexities of the diverse relationships in our local communities. This understanding not only supports our mission to preserve natural spaces for the good of the environment, but helps to build a corps of leaders engaged in sustaining their local communities.

The Arboretum offers educational events and programs for all ages and backgrounds ranging from preschool to adult.

### Support Us

*Become an Arboretum member today!*  
Annual memberships support education, recreation, and stewardship projects. Your membership donation is tax-deductible and helps us continue to make the Abbey land and trails accessible to the community. *Visit our website or contact us to sign up today!*

#### Suggested Membership levels

- \$10 Student
- \$25 Individual/Entry
- \$40 Family/Supporting
- \$100 Environmental Stewardship

#### Member Benefits

- Special invitations and discounts to educational programs and events
- *Sagaingan Seasons*, the Arboretum newsletter
- Access to the *Bailey Herbarium* and *Natural History Museum*
- Provide experiences like those you cherish for generations to come.

