

Minutes
Saint John's Arboretum Advisory Council
Monday, October 4, 2010 1:00 – 4:30 p.m.
Natural History Museum, New Science 150, SJU

Present: Tom Kroll, Terri Barreiro, Scott Daninger, Tom Wicks, Mike Connolly, Bob Russell, Greg Miller, Jenny Kutter, Tom Haeg, John Benschoter, John O'Reilly, Troy Knight, Emily Franklin, John Geissler (via phone)

Introduction of new council members:

- Troy Knight – environmental science professor, CSB/SJU Environmental Studies Dept.
- Emily Franklin – project manager, MN Environmental Initiative, former Arboretum fellow
- John Benschoter – retired pharmacist, Arboretum member
- Josh Smith – SJU Student Senate Rep (not present)
- Madeline Hansen – CSB Student Senate Rep (not present)

Abbey/University Structure:

- Abbey/University are currently undergoing a legal split into separate organizations
- Final split will affect the Arboretum since we operate as a partnership between the Abbey/University
- Abbey wants to define their role as landowners/stewards of the land
- University wants to see education continue as it has been
- Current Map proposal (*see attached*)
 - o Red boundaries – SJU campus
 - o Yellow “triangle” – “Abbey Arboretum;” Arboretum program would have longer (5 yr?) lease to use this portion of the land for environmental education
 - o Green areas – “Abbey Forest;” Arboretum program would have an annual renewable lease to use this portion of the land for environmental education
 - o The main premise for the specific boundaries is to clearly outline ownership and authority over activities on the different areas (i.e. University – campus; Abbey – lands)
 - Abbey wants to clearly demonstrate their stewardship of the land and protect it for long-term use, as well as have a system for better oversight
- Naming
 - o Currently – Saint John's Arboretum is a place (Abbey land) AND a program (University education)
 - o Options under new agreement:
 - Saint John's Abbey Arboretum
 - gives clear ownership of “place” to Abbey;
 - small change that won't create confusion from re-branding
 - would create additional confusion if name of program and name of place are sometimes the same; sometimes different (i.e. Abbey Arb K-12 programming in the Abbey Arb vs. Abbey Arb Maple Syrup Festivals in Abbey Forest)
 - Give program name distinct from both Abbey land names
 - Clearly distinguishes program from place to avoid confusion long-term
 - Short-term confusion during process of rebranding

- Timeline: Abbey/University task force plans to make recommendations this fall; Abbey discussion in January

Arboretum/OLC/PRP Merger

- Arboretum staff are currently in the middle of a series of conversations about incorporating new programming into the Arboretum (see history of Adventure Programming discussion in [Feb](#) and [June](#) 2010 minutes):
 - o Peer Resource Program (PRP): student-led group focused on leadership development and healthy risk-taking; traditionally facilitators for Challenge Course (group team-building activities) and Collegebound (annual adventure trips for incoming first-year CSB/SJU students); 3 paid students, 27 volunteers
 - o Outdoor Leadership Center (OLC): student-led group focused on outdoor recreation and experiential learning; hosts events, free equipment rental for students (i.e. skis, roller blades, bikes, snow shoes, Frisbees, etc); 14 paid student employees
- Arb/PRP/OLC: are we 3 organizations in 1 or are we 1 organization with 3 parts?
 - o Terri Barreiro is helping facilitate discussion between Arb staff and student reps from all 3 groups to define “who we are”
- Advisory Council role: Historically council advises Arboretum – does the council need to broaden to include OLC/PRP? Discussion:
 - o Staff – do we have enough staff to take these programs on? (*see Arb Org chart, attached*)
 - Hire of new EE coordinator (John O’Reilly) to specifically handle these programs
 - Sarah now in charge of K12 and volunteers; John is in charge of CSB/SJU and community
 - o OLC seems to be an obvious fit with Arb – strong focus on getting people outside
 - o PRP – harder to define, traditionally more nebulous organization, may take more work to see how they can fit
 - After 1 year can have a list of priorities of what needs to be done to make a good merger
 - Is PRP that hard of a fit? Can the addition of leadership development, facilitation, confidence building be an asset to Arb programming – a way for the Arb to continue to grow?
 - May not be exact fit with EE (both formal and informal), but would be good opportunity to reach audience we otherwise would not engage
 - o Environmental Education vs. Outdoor Recreation
 - Will Arboretum lose identity if focus shifts away from EE?
 - Need to maintain good work of the past
 - Are we stewardship or recreation? We need to tread carefully
- Council requests data and outcomes for the new organizations to more fully assess
 - o John O’Reilly will prepare recommendations to council for Dec meeting:
 - Needs for additional council members
 - Needs for committee to help advise
- ***John Geissler sent additional discussion points to the Arboretum staff via email since he could not be at the meeting in person – that email is attached at the end of the minutes***

Key Directional Priorities 2009-2013

1. Expand curriculum
 - a. Goal to reach more middle/high school students
 - b. Offer more campus options
 - c. Solar farm/energy curriculum

CONTINUE to work on through 2013

2. Office/meeting space issues
 - a. Addition of John's position, moving Fellow's office to the Annex building
 - b. New academic building planned at CSB that will open more space in SJU science buildings (2013?)
 - c. Identity committee work: add new building to master plan, new building is priority for next University fundraising campaign
 - d. Move Arboretum out to Annex?
 - i. Identifiable building, recognizable (temporary identity?)
 - ii. Vs. logical access/flow of student traffic

WORK COMPLETED. Move to "monitor progress" developments.

3. Add staff to support growth
 - a. New full-time EE coordinator – John O'Reilly
 - b. Volunteer coordination – Sarah Gainey
 - c. School of Theology intern – to expand spirituality related programming

WORK COMPLETED. Move to "monitor progress" developments.

4. Add big grant fundraising
 - a. Limiting factor: staff TIME – to research and write
 - i. Caroline Foundation (Crosby Family) – look into
 - b. Ongoing needs for fellowship and K12 bussing
 - c. Arb has reserves – avoid using until needed

CONTINUE to work on through 2013

5. Protect land/Arb status long-term
 - a. Lands around Abbey currently being worked on
 - i. Potential paid easements through 2008 sales tax funding
 - ii. Need to discuss option more/educate Abbey about options
 - iii. Invite David Hartwell

CONTINUE to work on through 2013

6. Assessment/accountability
 - a. We're good at saying "how many"
 - b. Need to work on assessing how our programs "make a difference" long-term

CONTINUE to work on through 2013

7. Strategic partnerships with more groups
 - a. Took in OLC/PRP
 - b. Improve dialog of sustainability values among CSB/SJU /OSB community (i.e. wind turbine)
 - c. Arb should make a statement to University about educational value of a wind turbine on campus (with reasonable economics)

Additional priorities to add:

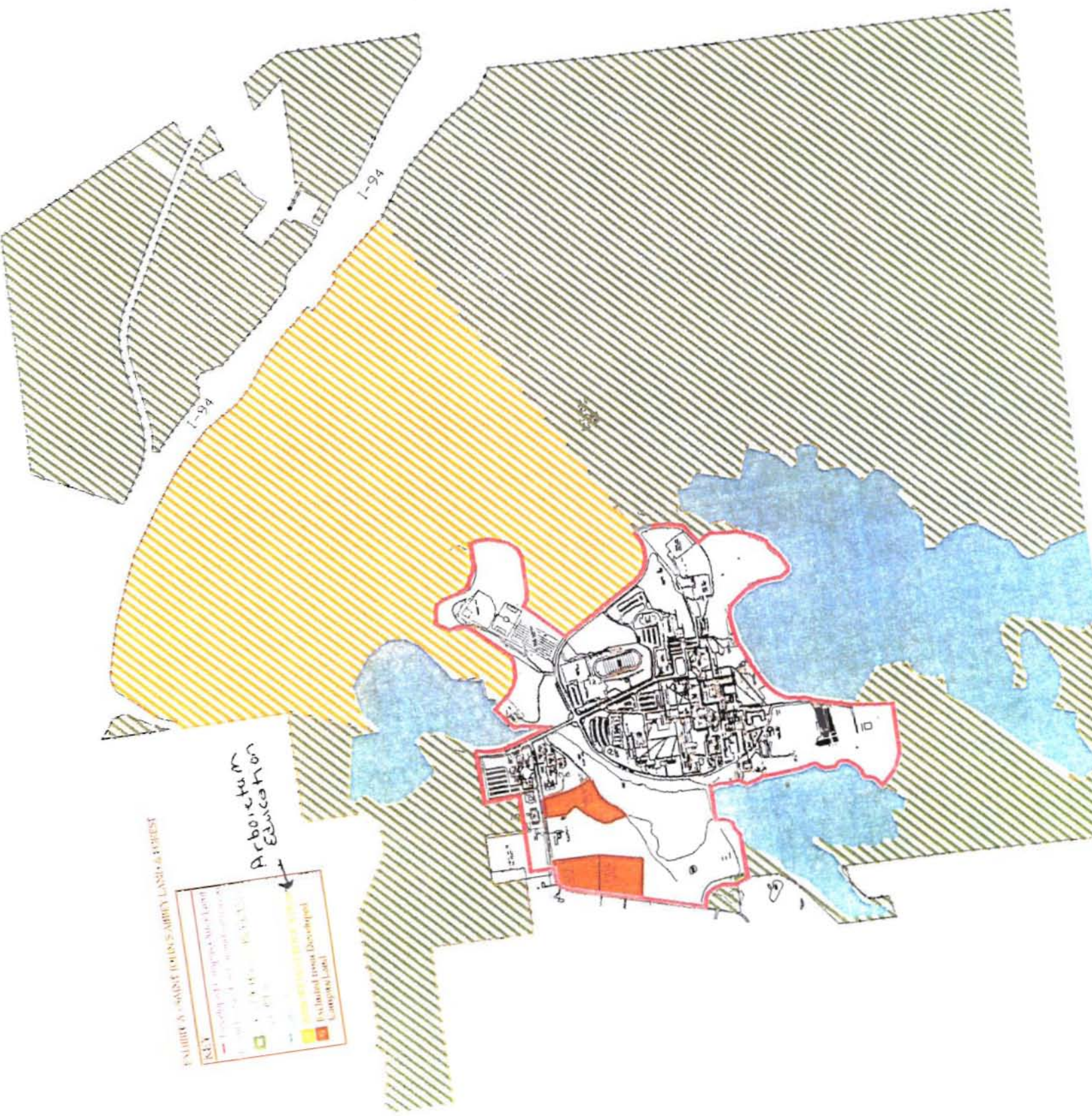
8. Membership

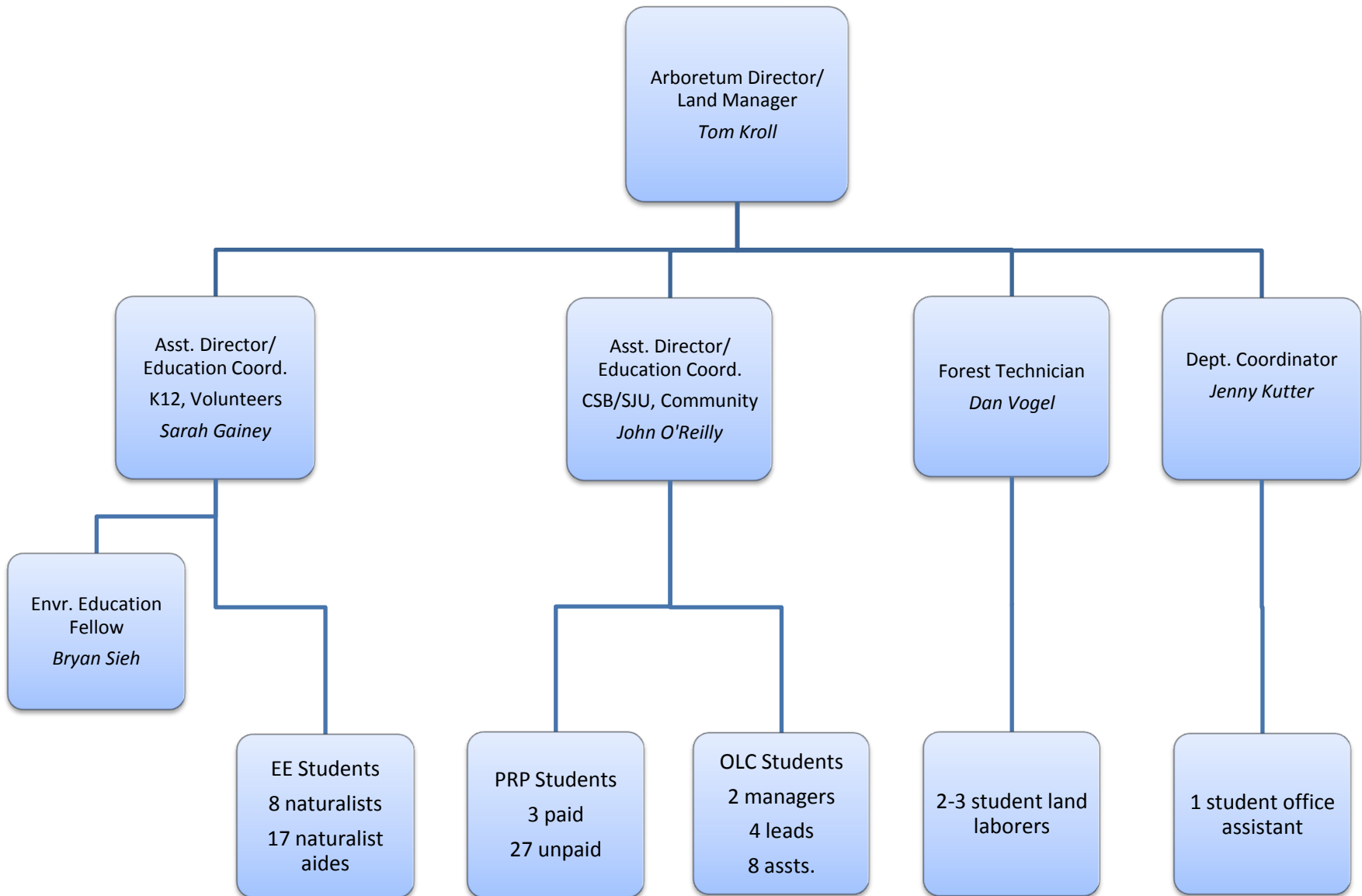
- a. Develop strategies to increase
 - b. Previous goal set to 500, should meet that in the next 1-2 years
 - c. Arboretum materials to new faculty/staff every year
 - d. Get CSB rep from student development on council?
 - e. Strategies for Arb membership to OLC/PRP programming
9. Wilderness trips/Outdoor exploration
- a. Creating a big CSB/SJU program
 - b. Tie to leadership, culture, environment, spirituality
 - c. Engage students, members, alums, and general community

TABLE 5 - WADSWORTH'S ARBORY LAND & FOREST

KEY	
	Property owned by Wadsworth Arboretum
	Land owned by Wadsworth Arboretum
	Land owned by Wadsworth Arboretum
	Land owned by Wadsworth Arboretum
	Water
	Land not owned by Wadsworth Arboretum

Arboretum Education





From: John [mailto:jdgeissl@d.umn.edu]
Sent: Wednesday, October 06, 2010 2:40 PM
To: Kroll, Thomas; Gainey, Sarah; Kutter, Jennifer; O'Reilly, John (Arboretum)
Subject: Arboretum thoughts

Hi Arboretum Crew....

In lieu of not being able to actively participate in the Arboretum Council Meeting, I put together some thoughts that I hope are helpful as you move forward...

The sense I got was that the Arboretum is trying to define who and what it is with the recent addition of PRP's, OLC to the mix. I think the attached figure (*taken from Outdoor Education: Methods and Strategies by Gilbertson, Bates, McLaughlin, Ewert*) may help as you trying to show how everything you are now doing is related... you are now an outdoor education provider instead of just an environmental education provider...

Some name ideas...

Saint John's Arboretum is the place – a unique natural arboretum of 2740 acres at the meeting place of continental biomes - owned by Saint John's Abbey

Saint John's Arboretum Outdoor Education Program.... is all the services you provide/coordinate (environmental education/interpretation, adventure education, interpersonal growth, leadership development, physical skills, etc all fall under this heading)

Saint John's Arboretum Land Management – is responsible for the stewardship of Saint John's Arboretum as directed by landowners Saint John's Abbey

With this I think the current mission would have to be slightly adjusted...

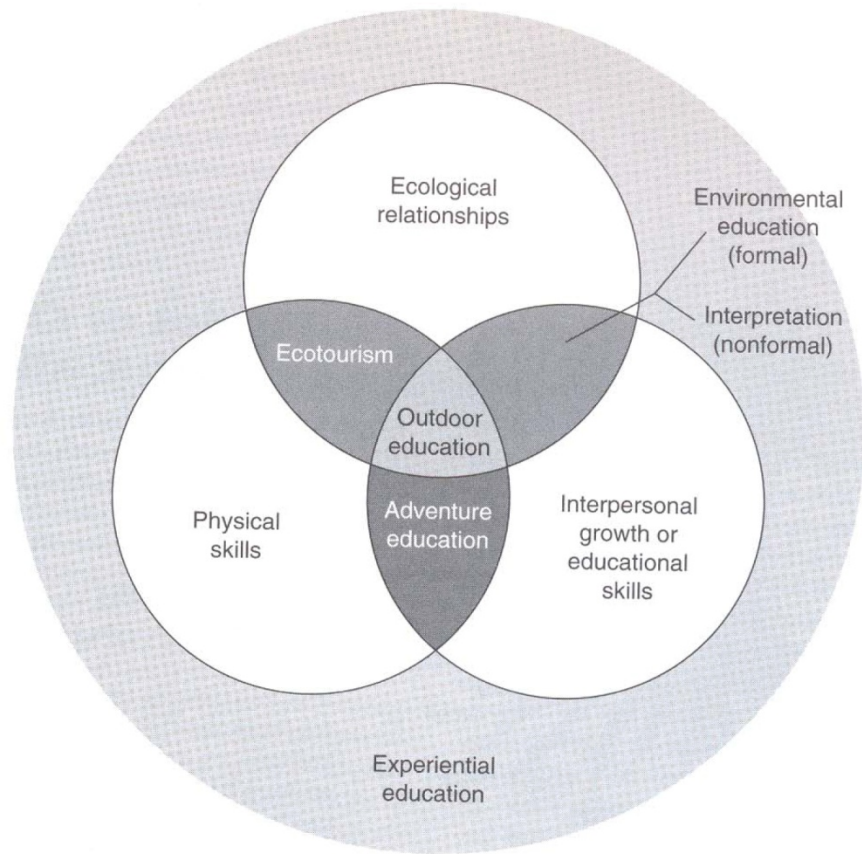
Saint John's Arboretum Outdoor Education Program mission:

A partnership between Saint John's Abbey, its 2,740 acres and Benedictine tradition of stewardship, and the mission of Saint John's University to provide a sustainable connection to the environment through outdoor education, recreation, and research.

Just some ideas... take them or leave them.... I think the change is a great opportunity for growth and comprehensive programming ...

All the best,
John

John Geissler
Director
Boulder Lake Environmental Learning Center
7328 Boulder Dam Road
Duluth, MN 55803
218-721-3731
www.boulderlake.org



Outdoor education is a blend of various subject areas.