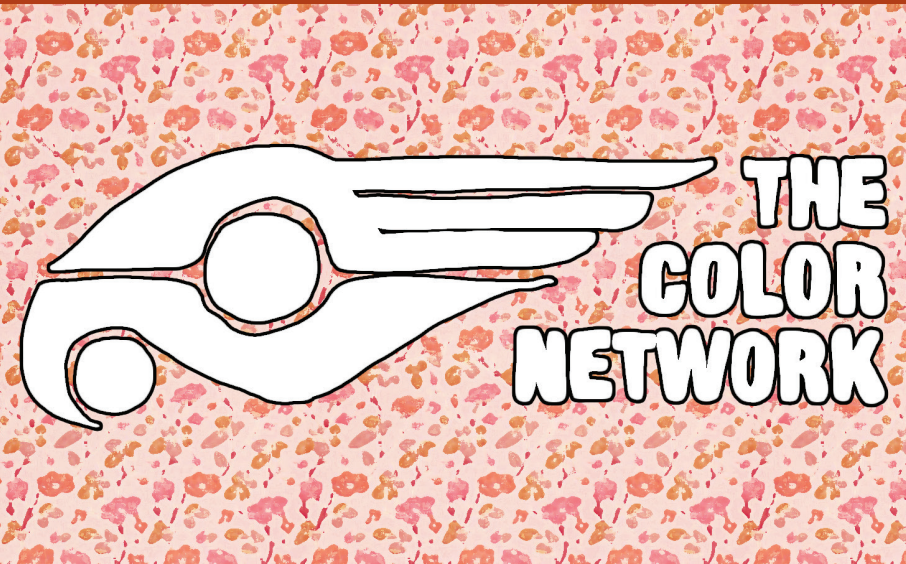


# MULIEBRIS: FEMME FEMININE FEMININITY



**March 13 – May 8, 2023**

**Benedict and Dorothy Gorecki Gallery Lounge  
Benedicta Arts Center**

Muliebris, the Latin word for woman, effeminate, feminine, is a juried exhibition that invited artists to submit work that speaks about the expansive definitions of femininity. The feminine can be interpreted in many ways: from personal introspection to social constructs, from the casual to the academic. This exhibition curates a show that considers intersectional viewpoints and resonant artwork for this topic.

The Muliebris exhibition is a collaboration between CSB and SJU Fine Arts Programing and The Color Network. The Color Network's mission is to aid in the advancement of people of color in the ceramic arts. The organization aims to assist artists in developing networks, opening dialogue between artists, and creating a mentoring space for new artists. Each artist in this exhibition is associated with the Color Network and identifies as being a person of color.

## CONNECT

TOPICS AND THEMES THIS EXHIBITION ENGAGES WITH:

- Embrace Difference
- Gender Studies
- Craft vs Art
- Serve Graciously
- Politics
- Identity
- Ceramics

## ONLINE RESOURCES

<https://www.csbsju.edu/fine-arts/visual-arts/muliebris-femme-feminine-femininity>

<https://www.thecolornetwork.org/>

<https://artaxis.org/>

## ENGAGE

Three guest jurors selected 10 artists from across the country to participate in this exhibition. The artists range in experience from newly graduated student artists to potters who have a lifetime of experience under their belts.

- Which pieces most speak to you in the show?
- What are the themes you see in each piece? What kinds of feelings are the artists trying to convey through their art?
- Other than ceramics, what other craft traditions are represented in this show? How do these mediums support the work?

The concept of feminine was left purposely vague to allow each artist to interpret it as they saw fit. Because of this, a rich variety of works were created for this show. The work looks at global and cultural issues, along with themes very personal to individual artists.

- Why do you think feminine is an important topic to think about as an art exhibition?
- Are power structures questioned or challenged in the work that you, see? If so, how, and where do you see this?
- What connections can you make between the works of art, in terms of subject, feelings, use of materials...?
- If you had to create a piece for this exhibition, what theme would you choose and what would the work look like?

Traditionally, clay begins as being a soft, malleable, organic material. As it dries, it gets harder and more rigid. Once fired in a kiln, clay becomes stonelike.

- How does the artist use clay/ceramics (its material properties, its history) to express their ideas. Do you find any of these examples interesting or unexpected? Why?
- How do the artists use color to express their ideas?
- Can you find any unexpected uses of ceramics in this exhibition? For example, can you find where clay was used when one would normally expect to see another material?
- In what ways do the artists trick the viewers' eye in the exhibition? How do they make hard objects look soft?