



The Office of Experiential Learning & Community Engagement supports programs that empower CSB/SJU students to integrate and apply knowledge and theory gained in the classroom setting to a hands on learning environment, such that a deeper understanding is gained and demonstrated through clear learning outcomes. The office brings together students, faculty members, businesses, non-profit organizations and government partners to promote access to mutually beneficial partnerships through experiential learning opportunities.

In This Issue:

- ◆ **Page 2: The Bonner Leadership Team (BLT)**
- ◆ **Page 3: Service-Learning Student Highlight**
- ◆ **Page 4: Community Partner and Bonner Highlight & Introduction of MISP Participants**
- ◆ **Page 5: Community Kitchen Expansion and ELCE Hiring!**
- ◆ **Page 6: Call for Applications**

Experiential Learning & Community Engagement

Fall 2014: Volume 12, Issue 2

Change is in the Air

The Office of Experiential Learning and Community Engagement (ELCE) recently experienced a change in leadership, as Marah Jacobson-Schulte resigned after seven years of service to the institutions. Marah served for three years as Service-Learning Coordinator and four years as the ELCE Director. For the last three years, Laura Hammond, served as Assistant Director under Jacobson-Schulte. She has now taken over as Interim Director. And says she will use her experience under Jacobson-Schulte to mirror her *“collaborative, energetic approach... to engage [the] staff, community members, and faculty in [the] mission of the office.”*



**Laura Hammond,
Interim Director of ELCE**

As the Assistant Director, Hammond's work had a strong focus on academic internships (as well as shared oversight of all ELCE programming with Jacobson-Schulte), but as the Interim Director she is placing a large emphasis on learning more about and supporting the day-to-day operations of other programs in the office. Her experience within the office and the support of existing professional and student staff have made for a smooth transition thus far! ELCE wishes Marah well as she moves on to her new adventures, as well as welcomes Laura's service during her Interim Director role!

-Kevin Curwick, Academic Coordinator



Follow us at [@ELCEandCSBSJU](https://twitter.com/ELCEandCSBSJU)



Like and recommend us on [Facebook](https://www.facebook.com/ELCEandCSBSJU)

Bonner Leadership Team (BLT)

Within the Bonner Leader Scholars program, a new group of student leaders has emerged and are calling themselves the Bonner Leadership Team (or BLT as they are affectionately named). BLT is an executive board that acts as a liaison between the Bonner Coordinator, (Ms. Adia Zeman), Bonner Student Employee (Ms. Katie Clearly), and the Bonner Scholars group.

Members of this team include: Katy Smith, Theresa Farrell, Allison Fischbach, and Allie Kanyetzny, who represent each of the Bonner classes from first year (FY) to senior.

This team works together to plan social events for the entire Bonner group. For example, this group recently worked with another ELCE program, CSB Community Kitchen which co-sponsors the Joe Town Table, community meals that are held monthly at The American Legion in St. Joseph. During this opportunity, held over Family Weekend in late October, Bonners were encouraged to share a meal and build community with their family members and members of the St. Joseph community.

Although these women are a part of a relatively new team, they have already began making great progress in helping the Bonner Leader Scholar program. According to Katy Smith, *“The best part about being on the Bonner Leadership Team is being able to see Bonners in a social setting outside of meetings, which helps foster relationships.”*

-Sinloria Macrae, Student Internship Coordinator



From left to right:

**Katy Smith (SR),
Theresa Farrell (JR)
Allison Fischbach (SO),
and Allie Kanyetzny (FY)**



**BLT member
Allie Kanyetzny
and her family at
the Joe Town
Table Event
during Family
Weekend,
October 24-26**



Bonners enjoying one of many “Bon-ding” events organized by the BLT

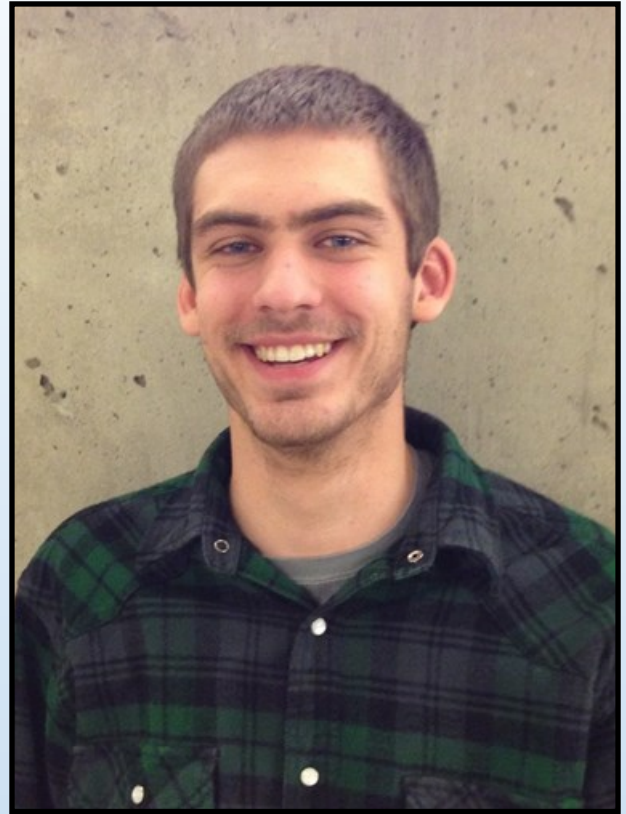
Service-Learning Student Highlight: Lukas Steffensmeier

"I am because we are," Lukas says, using an African proverb to describe the importance of service-learning and community living at CSB/SJU. Lukas, a sophomore Economics and Theology double major, is completing his service-learning project at Hands Across the World. Lukas uses his skills and academic knowledge to teach English to immigrants and explore the theological connections between economic poverty and injustice. Lukas enjoys getting to know the students most and interacting with them in between lessons. He says, "It's important to remember as you teach, the fine line between integrating the students into our culture, and preserving their own culture. The teachers do a fantastic job balancing both."

When asked why he enjoyed service-learning, Lukas responded, "I'm not in college just for me. I am a part of a community. Professor Finn's course reminded me that a person's worth and greatness is defined by so much more the monetary value of their paycheck. Service work is a part of who I am. I have an obligation to give back to the community that has given so much to me."

Thank you, Lukas for being an outstanding service-learning student! We appreciate your dedication to serving our greater community and the incredible steward you are in sharing the Benedictine way of life with others!

- Allison Fischbach, Academic Coordinator



**Lukas Steffensmeier, Sophomore,
Economics and Theology Major**

Thinking about registering for an internship this spring? You haven't run out of time!

The deadline for spring internship registration is
Monday December 1, 2014

****Please contact [Laura Hammond](#) if you need an extension.****

Don't forget to attend a required

"Legal and Professional Issues" session on:

- ⇒ December 3, 2014 - 4:30-5:30 p.m., CSB HAB 128A
- ⇒ December 4, 2014 - 4:30-5:30 p.m., CSB HAB 128A
- ⇒ December 8, 2014 - 4:30-5:30 p.m., SJU QUAD 170
- ⇒ December 10, 2014 (Study Day) - 1:00-2:00 p.m., CSB HAB 128A

**Interns
Wanted**



Community Partner and Bonner Highlight: United Way of Central Minnesota and Maggie Wothe

United Way of Central Minnesota is a new partner through the Bonner Leader Program, but it has been a longtime partner of ELCE as an internship host site. United Way's mission is to *"improve people's lives by mobilizing the caring power of Central MN."* The organization does so through committed to bettering the community, especially through issues such as access to food, homelessness, financial stability, quality out of school time, early learning and early literacy. First year Bonner Leader, Maggie Wothe is currently working with United Way in the resource development area. She assists in planning events, promoting United Way, and other office development efforts. Maggie has enjoyed her time at United Way thus far and says, *"United Way does so much for the community. It's focus in the community and recognizing the interconnectedness of the community. United Way brings people together."*

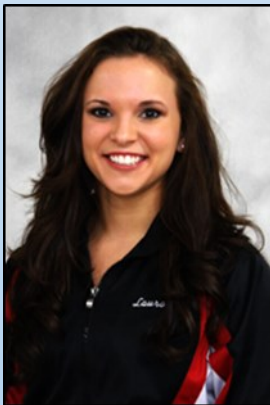


Maggie Wothe

- Katie Cleary, Bonner Student Worker

Introducing the 2014-2015 Mayo Innovation Scholars Program (MISP) Participants

Four students from the College of Saint Benedict and Saint John's University were recently selected to participate in the Mayo Innovation Scholars Program. They include:



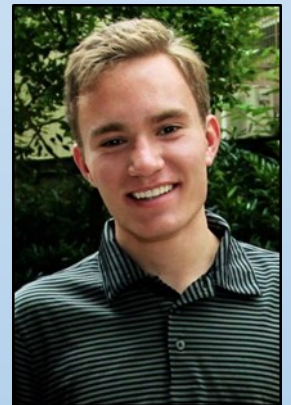
Laura Backus,
Communications



Andrea Betts,
Global Business
Leadership



Eric Boysen,
Biology/Pre-Physical
Therapy



James Pathoulas,
Integrative Health
Science

Students were selected after submitting an application and completing an interview with CSB/SJU faculty advisors, Jen Schaefer (Biology) or Lisa Lindgren (Global Business). As an MISP participant, James Pathoulas hopes to further develop his *"...professional skills not only as a scientist but as a member of a multidisciplinary team."* James describes this opportunity of *"...working with a group of diverse, dedicated, and motivated people in a high-stakes situation..."* as a parallel experience to projects that he will likely encounter post-graduation. During the next few months, MISP participants will work on research projects submitted by professionals from the Mayo Clinic in preparation for a presentation of their work this March.

-Kylee Hoheisel, Student Internship Coordinator

Community Kitchen Expansion



Community Kitchen is excited to announce its recent expansion to partner with SJU Dining Services. The program will now redistribute food surplus on both campuses with this new partnership. Beginning spring semester, Community Kitchen will utilize the Refectory's kitchen to prepare meals for its congregate dining program in addition to food prepared at the Gorecki. This food serves the program's congregate dining efforts which work primarily to serve educational programs at Casa Guadalupe Multicultural Center in Cold Spring. The expansion will not only decrease food waste on campus to a greater degree, but will also increase Community Kitchen's ability to address food insecurity in the community by expanding its capacity with partner programs like Casa Guadalupe

-Claire DesHotels, Community Kitchen Intern



...Literally!

Looking for your dream job? ELCE is hiring for a Mini-Bus driver!

Student drivers:

- Provide transportation from CSB to various community sites in the St. Cloud Area
- Work 6-7 hours/week with the possibility of up to 12-14 hours
- Plan a daily route based off of student reservations.

Minimum Qualifications to Perform the Duties of the Position:

- Must be at least 20 years old.
- Must complete and pass the CSB|SJU Defensive Driving Course (online).
- Must have a clean Minnesota driving record that meets the CSB|SJU insurance carrier requirements.

If you're interested, please apply online ASAP!

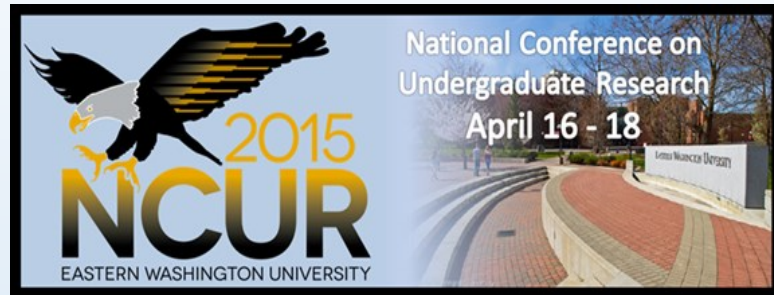
<https://www.csbsju.edu/forms/I9OFZAO360.aspx>

Upcoming ELCE Programming Applications Deadlines!

National Conference on Undergraduate Research

- ◆ Takes place April 16-18, 2015
- ◆ **Abstract Deadline: December 2, 2014 at 11:59 PST**
- ◆ References are allowed within abstracts, but not required.
- ◆ Abstracts are usually 250-300 words long. They should be no more than 450 words in length.

To apply: http://www.cur.org/ncur_2015/abstract_submission/



National Conference on Undergraduate Research
April 16 - 18



Lindmark Fellowship In Ethics

- ◆ Summer Fellowship from June 1– August 7, 2015
- ◆ **Application Deadline: January 25, 2015**
- ◆ Selected Fellows will undertake professional research topics in their field and be notified of their selection by Friday, February 13, 2015

To apply: <https://www.csbsju.edu/forms/OKJW5WYXVZ.aspx>

Minnesota Public Radio/Gary Eichten Fellowship

- ◆ Summer Fellowship from June 1-August 7, 2015
- ◆ **Application Deadline: January 25, 2015**
- ◆ Selected fellows will be at MPR, located in downtown St. Paul, learning the basics of news writing, reporting and production. Those selected will be notified by Monday, March 1, 2015

To apply: <https://www.csbsju.edu/forms/M2KRSW7W4F.aspx>



CSB Marie and Robert Jackson Fellows Program

- ◆ Summer Fellowship from June 1-August 8, 2015
- ◆ **Application Deadline: November 30, 2014 (January 16, 2015 for students currently abroad)**
- ◆ **OPTIONAL Brookings Program:** upload essay outlining interest in a community engagement placement with Children's Museum of South Dakota OR United Living Center/ Child Development Center OR Boys & Girls Club of Brookings, all located in Brookings, SD. **These sites will have a housing option at no charge to students.**

To apply: <https://www.csbsju.edu/forms/NZ458YZXF9.aspx>

