

State of Region 4

“Go Long and Stay Strong”

Sigma Theta Tau International



Maureen T. Greene, RN, MS,
CNS, ACNP, PhD ©
Region 4 Coordinator

Biennia Convention: November 2007

What is Region 4

The north-central states of the U.S. comprising chapters in Wisconsin, Minnesota, North and South Dakota, East Iowa and the Southern Chapters in Canada

How many chapters are in Region 4

We are proud to have 28 chapters in the Region.



What is the State of the Region

- 27 viable chapters
- Increasing membership 45%
- Diverse and creative service regions affiliated with Schools of Nursing
- Creative Leaders who are reaching out in service and professional growth avenues

Strategic Directions 2005-07

- KNOWLEDGE
- LEADERSHIP
- SERVICE
- COMMUNITIES
- SUSTAINABILITY

Knowledge



- Many of the chapters
 - Demonstrated scholarly program planning
 - Used the knowledge services available through Sigma Theta Tau
 - Participated in presentation here at Biennium and local, regional and international venues

Leadership

- The Region 4 committee:
- Neil MacNaughton (Gamma Chapter) and Cecelia Wendler (Delta Phi Chapter) Assisted in Showcase Awards and Chapter Key Award Judging!
- Norma Krumwiede (Delta Phi) and Camilla Jaekel (Kappa Mu) assisted in Communications



Leadership

- Josephine Arriola (Delta Phi Chapter) and Cathy Penn (Kappa Xi) Roberta Pawlak (Beta Eta at large) assisted in Mentoring and Membership Involvement
- Jill Valde (Gamma Chapter) and Roberta Pawlak (Beta Eta at large) assisted in Program Planning and Leadership and worked on the preliminary planning for a Region 4 Gathering in last Spring

Service

Many of the chapters are active in service activities as fund raisers and other mechanisms of outreach.



Communities

- An attempt was made to bundle the region into more geographically distinct units for more local networking through the Regional Coordinating Committee



The Bundles

- Milwaukee Bundle: Eta Nu, Delta Gamma, Tau Sigma, Tau Mu, Beta Eta at Large
- North Dakota/Manitoba Bundle: Xi Lambda, Eta Upsilon, Xi Kappa at Large, Kappa Upsilon, Omicron Tau
- South Dakota Bundle: Rho XI, Phi, Zeta Zeta (This region has opportunity for growth???)
- Iowa Bundle: Pi Kappa, Kappa XI, Gamma, Rho Eta
- Minnesota Bundle: Kappa Phi, Zeta, Chi at Large, Kappa Mu, Mu Lambda
- Central Wisconsin Bundle: Theta Xi, Delta Phi, Eta Pi, Kappa Pi at Large, Pi Phi

Sustainability

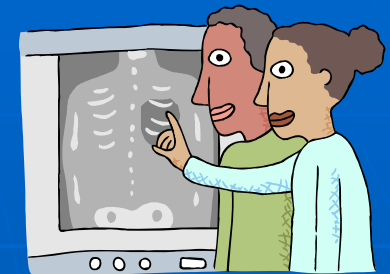


- Omada Board Leadership
- Geriatric Nursing Academy
- Maternal-Child Health Academy



- Chiron Mentored Leadership

Ways the Region has tried to Stay Together



- Region 4 Conference Calls: Six Calls with presidents or president elects
- Chapter Leadership Academy
- Attempts to have a Regional Conference
- Delegates and members at Biennium
- Dinners at Events!!

What Should We do Differently?



- List on your half sheet of paper ideas for improvement, need or questions

What are some of our challenges besides time and distance?

- Getting individual to run for Board and committee positions especially the young
- Methods to Mentor/Monitor new members
- Organizing and Transitioning the Board and Members for Activities that are needed to complete a Strategic Plan



What is going Right!

- 45% increase in membership (evidenced from the chapter annual reports)
- Use of email and websites to enhance communication
- Joint Chapter activities to share the duties, share the wealth!
- Commitment to participate in Chapter and Biennial events: sending something or someone!
Awards and Recognition



Awards and Recognition

- What Region 4 Members have received an award or recognition this biennium?

Where do we go from Here?

- Continue to build a strong chapter infrastructure
 - Membership
 - Board Succession Planning
 - Transitional training
 - Contact with your Regional Coordinator and STTI staff
 - Visit the STTI website often
 - Make your Strategic Plan your Template to Planning and Implementing Achievement



Where do we go from Here? (Cont)

- At the Regional Level
 - Plan on having a chapter representative on all regional conference calls
 - Seek collaboration with your Bundled chapters for co—program planning
 - Talk to local colleges of nursing and see if they would like to at large or co-mingle chartering planning
 - Help plan a REGIONAL Gathering
 - Think Global and Wide: Run for Regional Office or ask to be part of the Regional Committee!

Remember of Mantra for 2007-2009

**“Go Long
and Stay
Strong”**

Thank you for all you Do!

