

Trends

February 2007
Vol. 7, Issue 8

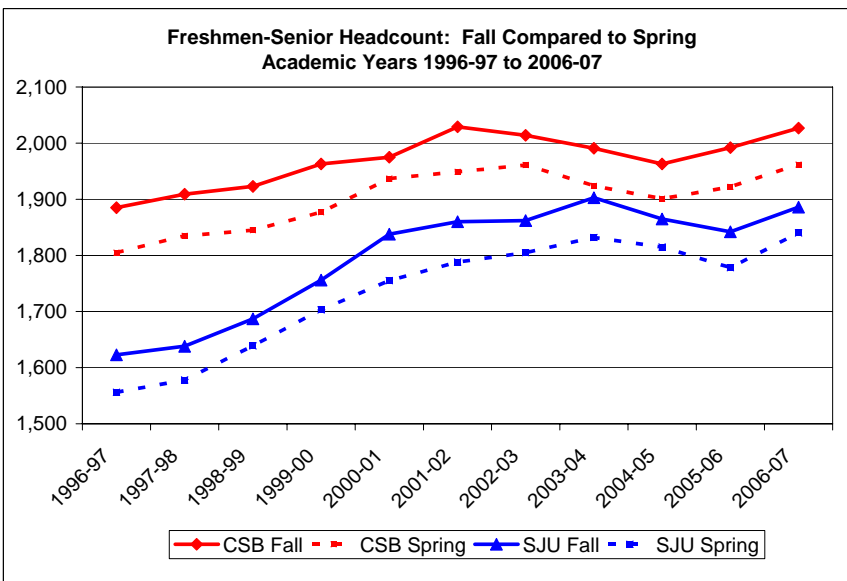
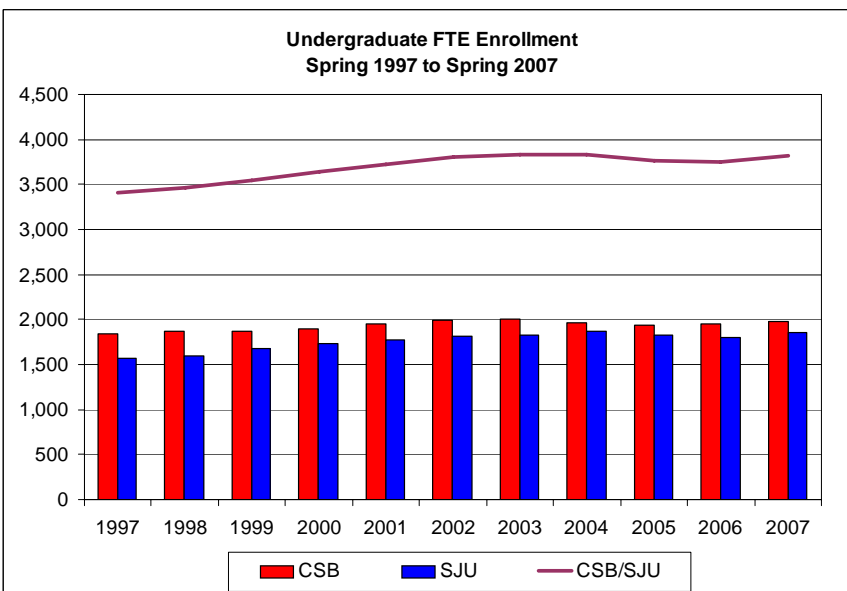
A Research Newsletter Prepared by Enrollment, Planning and Public Affairs

Spring 2007 Enrollment Update

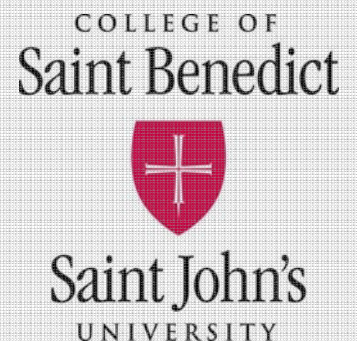
Spring 2007 tenth day enrollment of first-year to senior students came in nearly as it was projected last fall. Tenth day headcount this spring enrolled totaled 1,962 at the College of Saint Benedict (5 more students than projected last fall) and 1,840 at Saint John's University (18 more than originally projected). Most of the increase over projection was due to small additions in the number of new, transfer and readmitted students.

Fall-to-spring retention was stable at both the College of Saint Benedict and Saint John's University. Each year, about 5% of all students enrolled in the fall do not return for the spring term. December graduates make up the largest share of the fall-to-spring "melt." Between one-third and one-half of the enrollment change from fall to spring is explained by December graduates.

Spring 2007 first-year-to-senior enrollment was nearly as projected. Retention from fall to spring was stable.



Prepared by Karen Knutson,
Associate Director of
Institutional Research

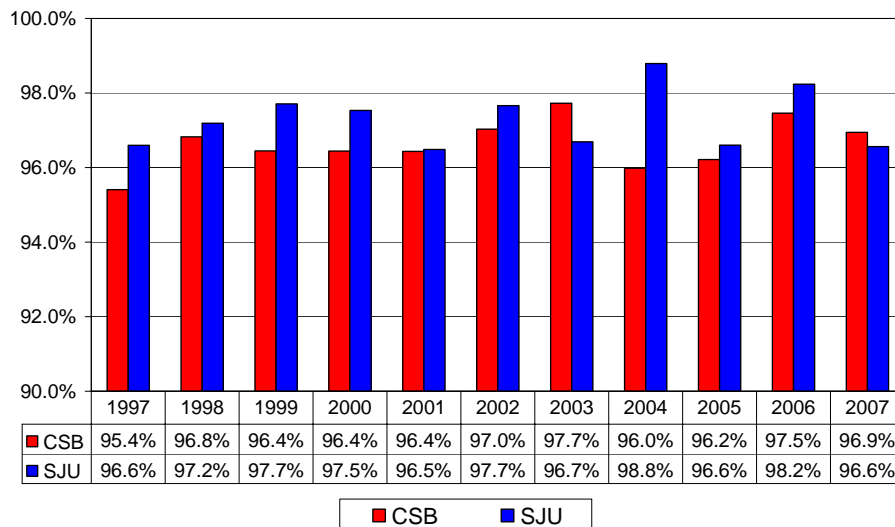


First Year Persistence to a Second Semester

First-year students present the highest risk of withdrawing between the fall term and the spring term. After December graduates, they represent the largest portion of the fall-to-spring melt. Nonetheless, first-to-second semester retention rates of new CSB and SJU students historically have been very high – and this year was no exception.

Throughout the last decade, between 95% and 98% of all first-year students have returned for their second semester. High retention rates within the first year contribute to our high (well above national average) rates of retention in general. All students who leave are asked to complete an exit survey. Similar to prior years, the major reasons most frequently cited for leaving this year included personal or health problems (38%), the absence of a preferred major at CSB/SJU (19%), social life or fit here (19%), and financial problems (13%).

**New Entering First-Year Returning for Second Semester
Spring 1997 to Spring 2007**



For additional information about enrollment or retention, please contact Karen Knutson in the Office of Institutional Planning and Research at kknutson@csbsju.edu or at 5922.

Past issues of the *Trends* research newsletter are available at <http://www.csbsju.edu/institutionalresearch/trends/>.