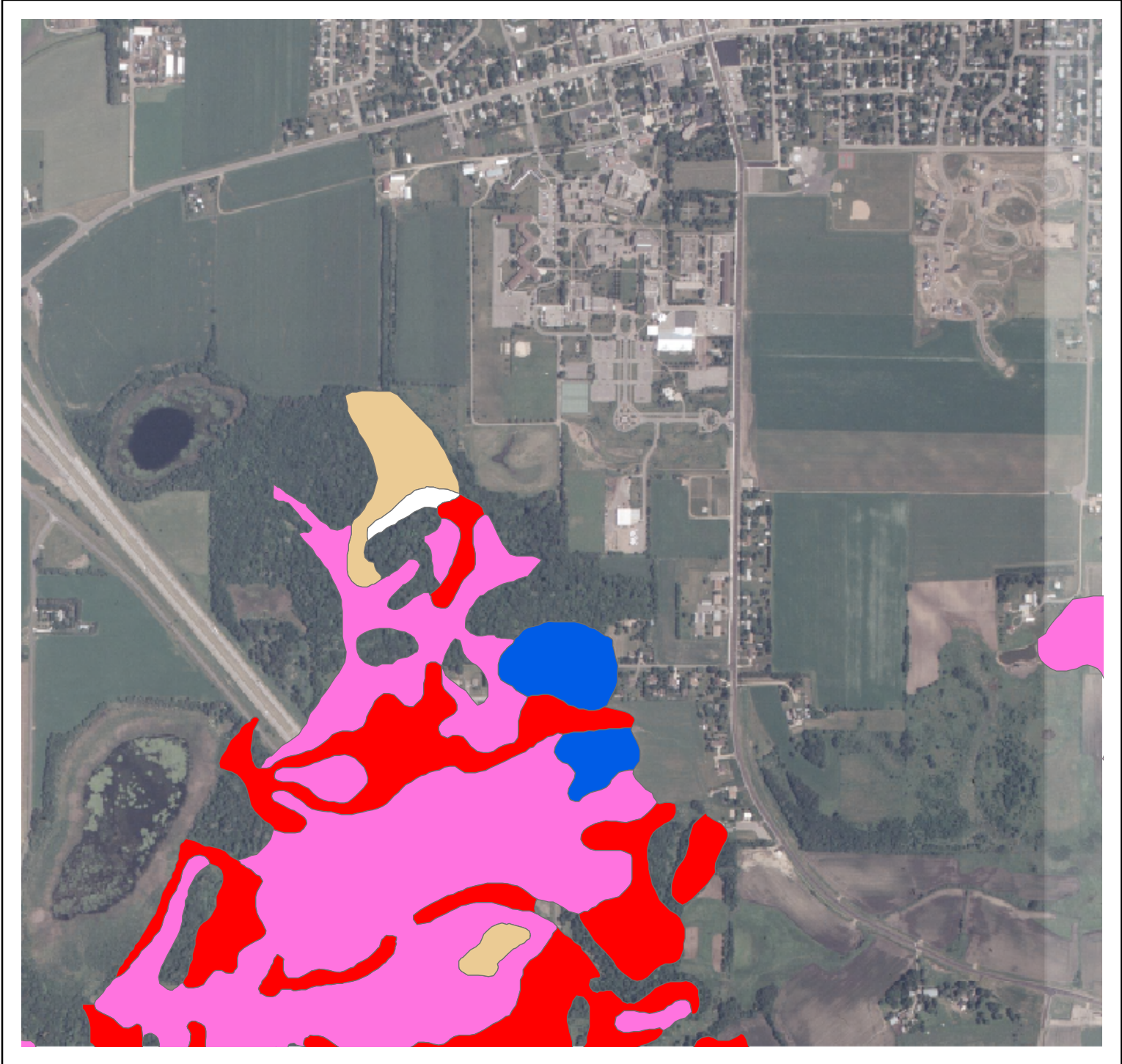
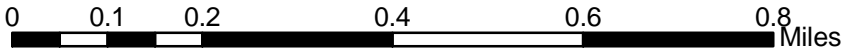







CSB Soil Types



LEGEND



NAME

-  Alstad sandy loam, 1 to 4 percent slopes
-  Cushing sandy loam, 2 to 8 percent slopes
-  Dalbo loam, 2 to 8 percent slopes
-  Gonvick loam, 1 to 2 percent slopes
-  Waukon loam, 2 to 6 percent slopes