

Nature Notes

For the
week of
February
16-22

From your friends at Saint John's Arboretum!

The Snow Flea: *Achorutes nivicola*

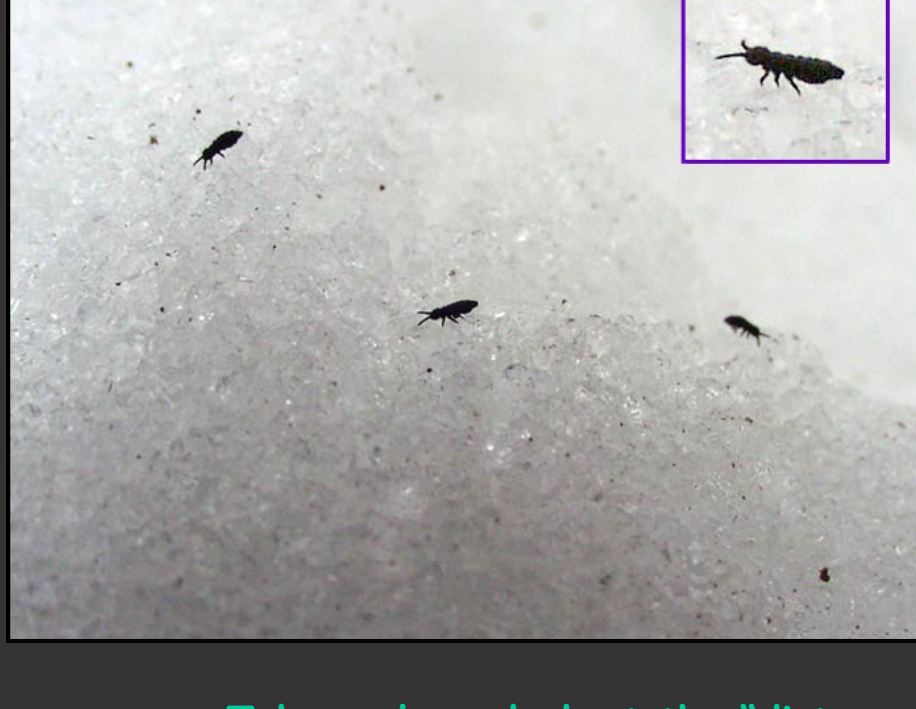


Photo courtesy of University of Wisconsin

Take a closer look at the "dirty snow" by the base of a tree and find the snow flea!

- Snow fleas are actually a type of insect called springtails, a name that reveals the way this critter moves!
- The springtail has two "tails" that tuck under its body and are then held by tiny hooks. When the springtail releases the hooks, it goes flying through the air!
- Sadly, the snow flea has little control over her flight path and often ends up in the same spot or just a few inches away.
- Want to find a patch of snow fleas? On a warm winter day, search for them at the bases of trees where they swarm to the snow's surface in a frenzied search for food and decayed plant materials!
- Like many insects, the snow flea is temperature sensitive. Because of antifreeze proteins that lower the freezing point of body fluids, this insect can tough out the cold winter months without freezing to death.
- Check out this [YouTube clip](#) to see what a flock of snow fleas looks like!

Sources:

- <http://www.youtube.com/watch?v=fsq1KtiGfEQ>
- <http://dnr.wi.gov/org/caer/ce/eek/critter/insect/snowflea.htm>
- <http://www.youtube.com/watch?v=fsq1KtiGfEQ>

Upcoming Arboretum Events

2011 Winter Carnival Events

Friday, February 18

Powder Ridge Bus

Ski or snowboard at the fabulous Powder Ridge! Bus leaves OLC @ 5:30pm. Sign up at the OLC. Cost to be determined.

Moonlight Snowshoe or Ski

6:30-pm-9:00pm

Skis and snowshoes provided! Meet at the OLC.

Saturday, February 19

Sledding

12:00pm-4:00pm

Mad bomber, spills and thrills at the Sledding Hill with a cardboard sled race at 1:00pm! Free hot cocoa!

Winter Games

12:00pm-4:00pm

Frisbee golf, big green ball, kick ball and more! Meet at the sledding hill.

Pick Up Hockey Game

Flyntown Rink 2:00-6:00pm. Skates provided.

Winter Camping/Quinzhee Building

12:00pm-Sunday morning

Come for the clinic or stay overnight! Campers must attend a clinic

Wednesday, February 16. Sign up at the OLC.

Gear Swap

Bring your gear, trade your gear at the OLC.

Sunday, February 20

Ice Fishing Tournament

10:00am-1:00pm at Lake Sag

Free chili and hot cocoa. Must register at the OLC.

Bouldering Competition

1:00pm

Rock out with your friends! Reserve shoes at the Wall.

MN Natural History Lecture: Capturing the Essence of Place

Presented by Joel Truckenbrod, Nature Photographer

Monday, February 21, 6:30-8pm

New Science Center, SJU

Join us for part one of this season's lecture series featuring three local nature photographers! Using a large format camera and sheet film, Joel takes an experiential approach to representing the essence of place. His presentation explores the methods behind his photographs while providing helpful tips in taking your own photos.

Maple Syrup Festivals

Saturday, March 26

Saturday, April 2

Mark your calendars for our annual maple syrup festivals! Sap collecting, syrup cooking, horse-drawn rides, demonstrations, and hot maple syrup make this a fun-filled event! Stay-tuned for more maple syrup events, including the date for our student Tapping Day when we attempt to tap over 1,000 trees in just three hours! Sign up on our [volunteer list](#) if you are interested in helping with this year's events.

Forest Firefighter Training

April 21st, 2011

Want to add certified forest firefighter to your resume? Just take a course this spring offered by The Nature Conservancy with assistance from MN DNR, and Saint John's Arboretum! Details for training location and [registration form](#) are online.

If you would like to be on the volunteer e-mail list for the Arboretum, please e-mail your name and graduation year to: arboretum@csbsju.edu.

We'll be in touch...

Your friends at the Arboretum

It's your backyard, so get out and play!

***Nature Notes is a weekly publication designed to keep you informed about exciting events offered by the Arboretum!

Saint John's Arboretum
104 New Science Building
Collegeville, MN 56321-2000
320.363.3136
www.csbsju.edu/arboretum