



**Annual Memberships\***

- \$10 Student (or graduate within 3 years)
- \$25 Entry       \$40 Supporting/Family
- \$100 Environmental Stewardship
- \$\_\_\_\_\_ Other

Use this additional gift of \$\_\_\_\_\_ for:

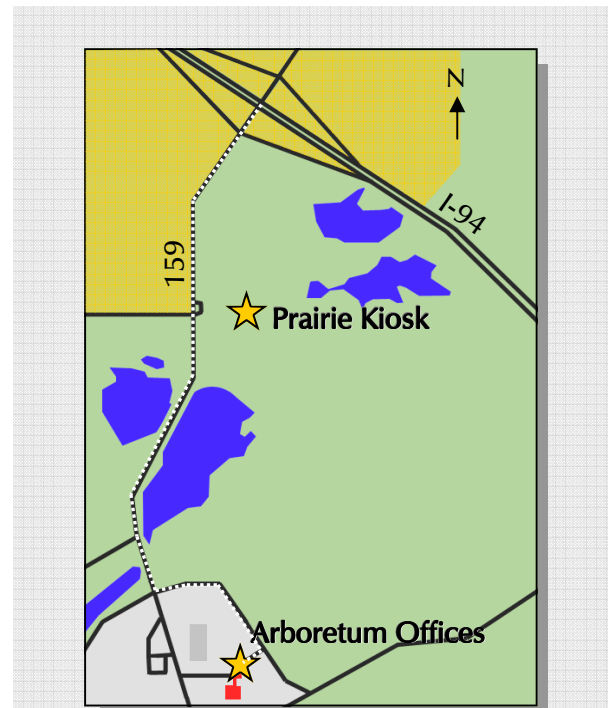
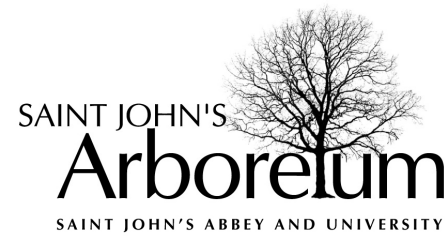
- Land Legacy Fund** – Preservation of the rural nature of the Saint John’s area.
- Environmental Education Endowment in honor of Fr. Paul Schwietz** – Sponsors preK-12 education programming.

\*All gifts are tax deductible.

**Membership Benefits Include:**

- *Sagatagan Seasons*, the Arboretum’s quarterly newsletter.
- Special invitations and discounted fees for Arboretum educational programs and field trips.
- Access to Saint John’s Herbarium and Natural History Museum.
- Access to Saint John’s land and trails.
- Use of the cross country ski trails and an introductory ski lesson.

**Please return form to:**  
 Saint John’s Arboretum  
 Saint John’s University  
 Collegeville, MN 56321-2000  
 320-363-3163  
 arboretum@csbsju.edu  
 www.csbsju.edu/arboretum



**Directions**

**Prairie Kiosk Trail Head:** Take the Saint John’s exit from I-94 and go south about 1/2 mile. The Kiosk is a small wooden structure in the prairie on the east side of the road.

**Arboretum offices on campus:** Take the Saint John’s exit from I-94. Turn south and proceed for about 1 mile until reaching a four-way stop. Turn left, continue for 1/4 mile, then turn right at the brown Science Lot 1 & 2 information sign. Go past the Science Lot 2 entrance. Park anywhere in Science Lot 1. The Arboretum offices are in the New Science Building on the east side of the parking lot, just inside the main entrance and to the left of the large pendulum.



**Get Involved**

**Volunteering**

Saint John's Arboretum has a variety of different volunteer opportunities open to the community. For more information, call or visit us online.

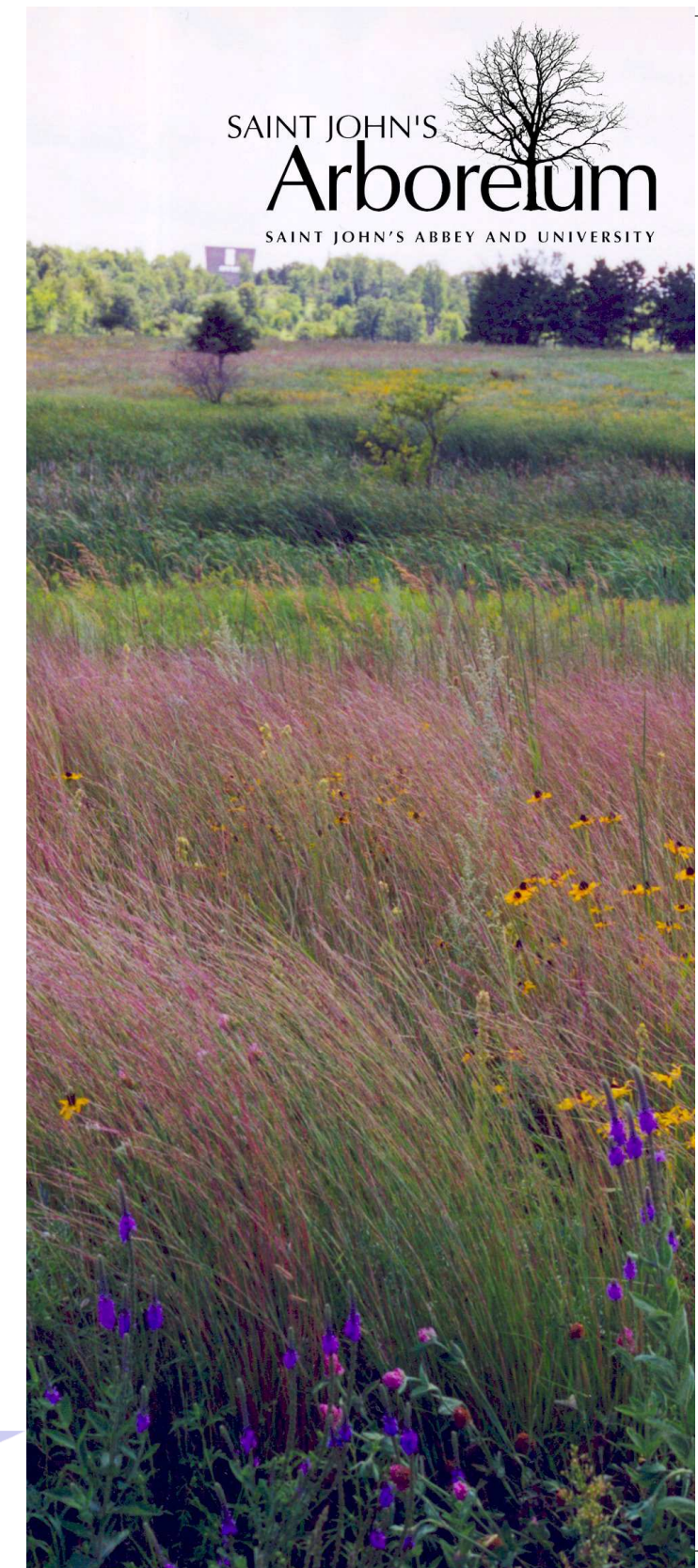
**Membership**

Saint John’s Arboretum is member supported. Annual membership advances environmental education and land stewardship efforts on the Arboretum’s more than 2,700 acres. For more information on becoming a member, please visit us online or contact our offices via phone or email.

Help preserve our future.  
 Join us today!

Saint John’s Arboretum  
 Saint John’s University  
 Collegeville, MN 56321 - 2000  
 Ph: (320) 363 - 3163  
 Fax: (320) 363 - 3202  
 www.csbsju.edu/arboretum  
 arboretum@csbsju.edu

Saint John’s Arboretum is grateful to Saint John’s Abbey for the use of its land and thanks Saint John’s University and the College of Saint Benedict for their support of environmental education.



**“We will come to know ourselves as part of the created world, and not in opposition to it.”**

- Abbot John Klassen, O.S.B. “The Rule of Benedict and Environmental Stewardship”



Photo by Christopher Brenny

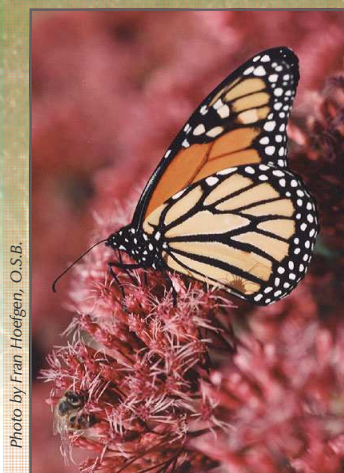


Photo by Fran Hoefgen, O.S.B.  
A monarch butterfly seated on a cluster of blazing star blossoms.

Saint John's Arboretum, a partnership between Saint John's Abbey and Saint John's University, encompasses over 2,700 acres settled by Benedictine monks in 1864. The varied terrain and its unique location provide the Arboretum with considerable habitat diversity.

### Spiritual Renewal

Miles of hiking and ski trails through beautiful surroundings present daily opportunities to seek out peaceful solitude.

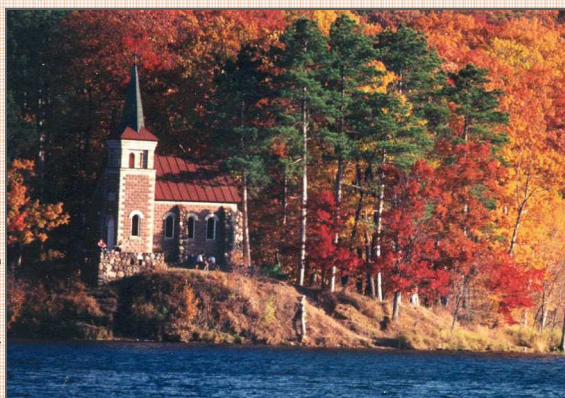


Photo by Fran Hoefgen, O.S.B.

The Stella Maris chapel on Lake Sagatagan.



Photo by Michael Crauser

Environmental education coordinator Sarah Gainey introduces a pair of students to snowshoe hare and beaver pelts.

### Environmental Education

Saint John's Arboretum provides an array of environmental education opportunities for a variety of audiences, including:

- Comprehensive, hands-on curriculum currently serving thousands of preK-12 students annually.
- Education and research opportunities for the students, staff, and faculty of the College of Saint Benedict and Saint John's University.
- Educational and recreational programming for the public, including community and youth groups, land owners, area residents, visiting organizations, and Arboretum members.

### Sustainable Land Use

- Saint John's Arboretum promotes the long-term health of area wildlife, plants, land, and water.
- The Arboretum forests are annually certified as well-managed, and supply most of the wood used in campus furniture.
- The Arboretum works with its neighbors to preserve the area's rural landscape.



Professor Derek Larson applies protective bud caps to young white pine trees.



Photo by Fran Hoefgen, O.S.B.

Yellow lady slipper.

### Habitat Conservation

Saint John's Arboretum is a natural arboretum, dedicated to the conservation and restoration of central Minnesota's diverse native habitats, including prairie, oak savanna, wetlands, and hardwood forest.

Saint John's Arboretum celebrates and preserves the unique beauty and richness of God's creation in Central Minnesota and fosters the Benedictine tradition of land stewardship, education, and environmental respect.

Select one of the payment options and return this form with your gift.

Please accept the enclosed gift of \$\_\_\_\_\_.  
Make check payable to Saint John's Arboretum.

Please charge this gift of \$\_\_\_\_\_.

Credit Card Information:

Discover  American Express  MasterCard  Visa

Name on card: \_\_\_\_\_

Account #: \_\_\_\_\_

Expiration Date: \_\_\_\_/\_\_\_\_/\_\_\_\_

Yes, I am interested in volunteering at the Arboretum.

### New Membership

Yes, I'd like to become a member of Saint John's Arboretum!

Names: \_\_\_\_\_

Address: \_\_\_\_\_

Phone: \_\_\_\_\_

E-mails: \_\_\_\_\_